

GH-6261443877

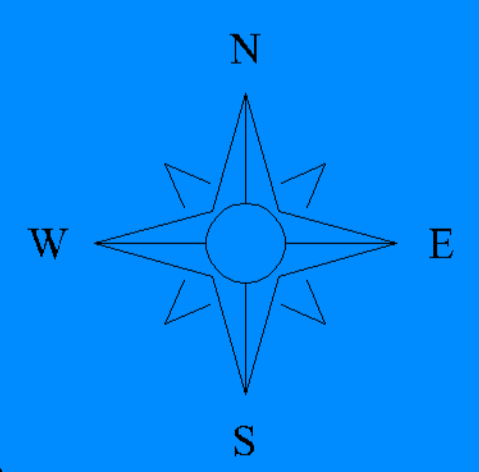
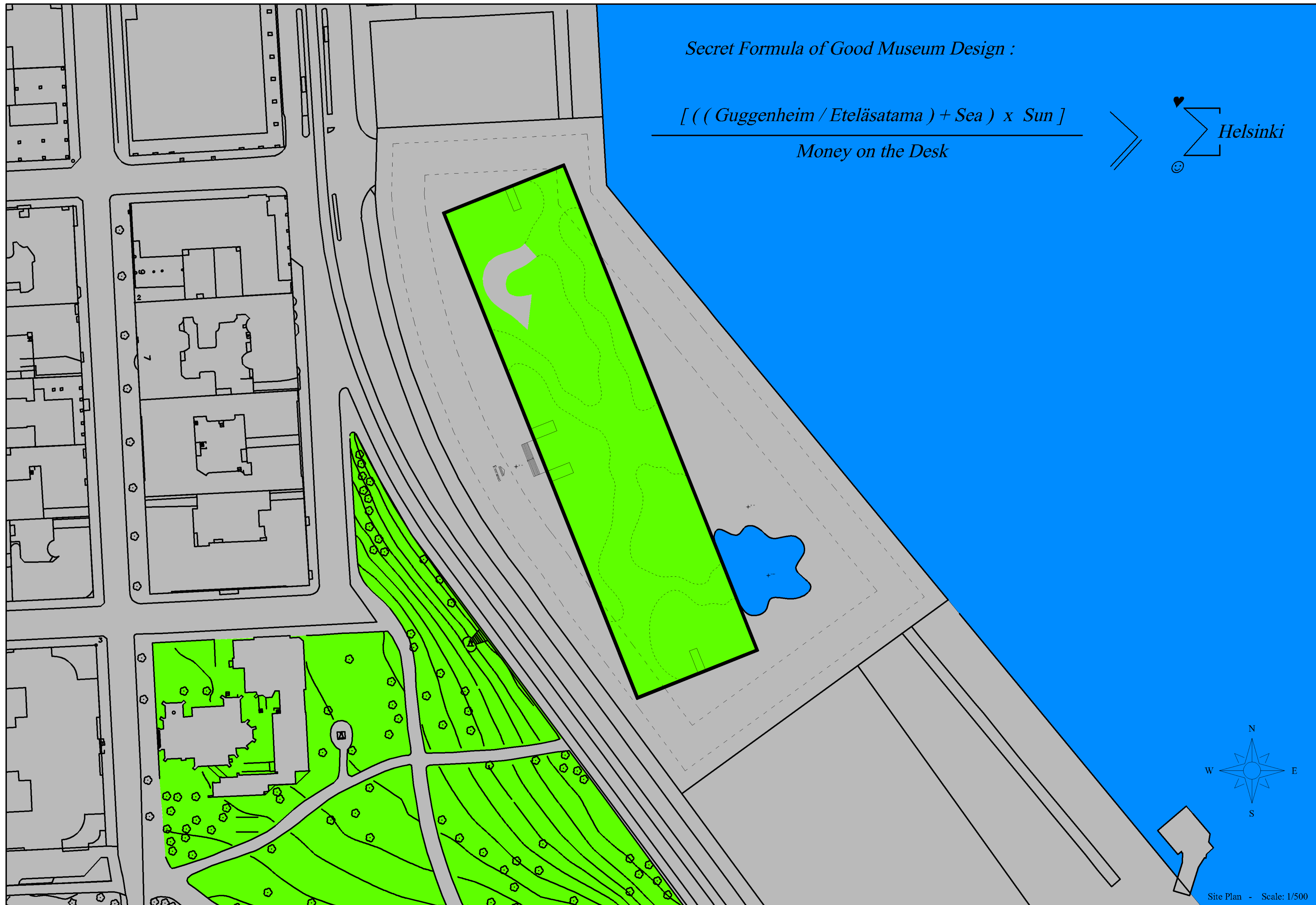
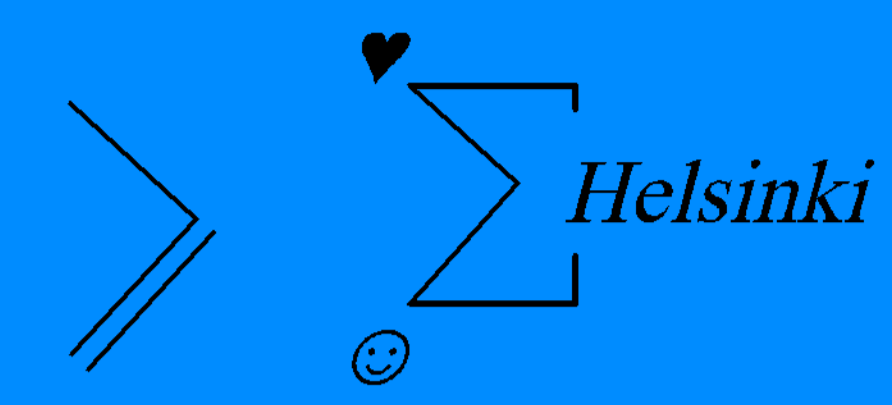
Guggenheim Helsinki Design Description

Design idea is: mixing urban and museum. Program requirements are composed by usual architectural behaviors. The building has 3 floor, 7m height each. Store and Bar/Café sections are situated their faces to the downtown. Inside of the museum there is a tunnel network from ground to top. This tunnel has a different hierarchy shape from the building. A person can enter this tunnel, walk through and go to the green roof, like walking in a park without entering the building. Tunnels are semi-transparent with glass holes; so the museum building has become an exhibition object. Tunnel will be made by Finnish woodworking. This will create a domestic space in the network.

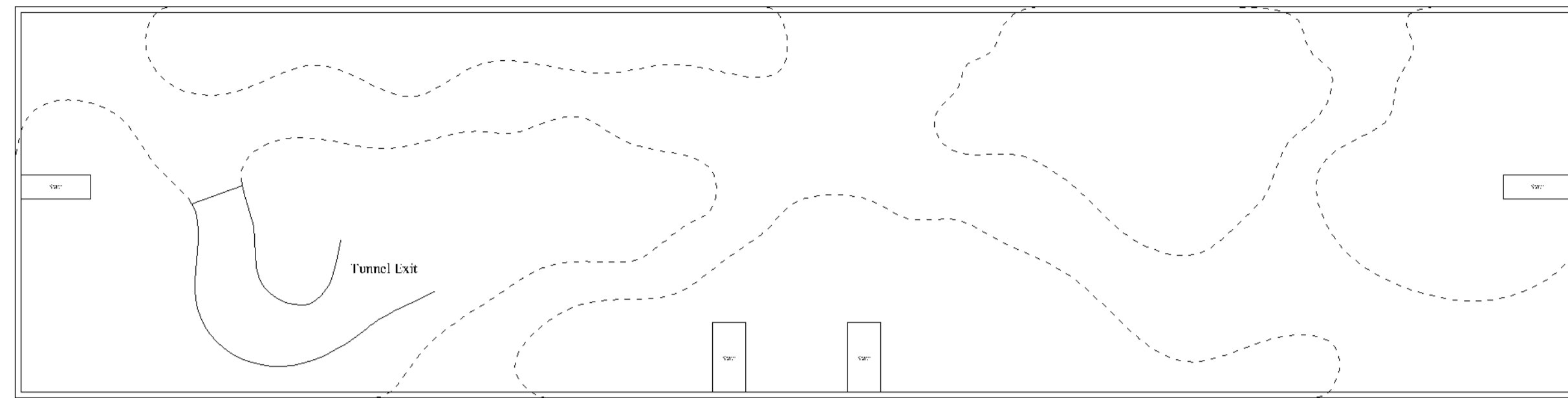
Secret Formula of Good Museum Design :

[((Guggenheim / Eteläsatama) + Sea) x Sun]

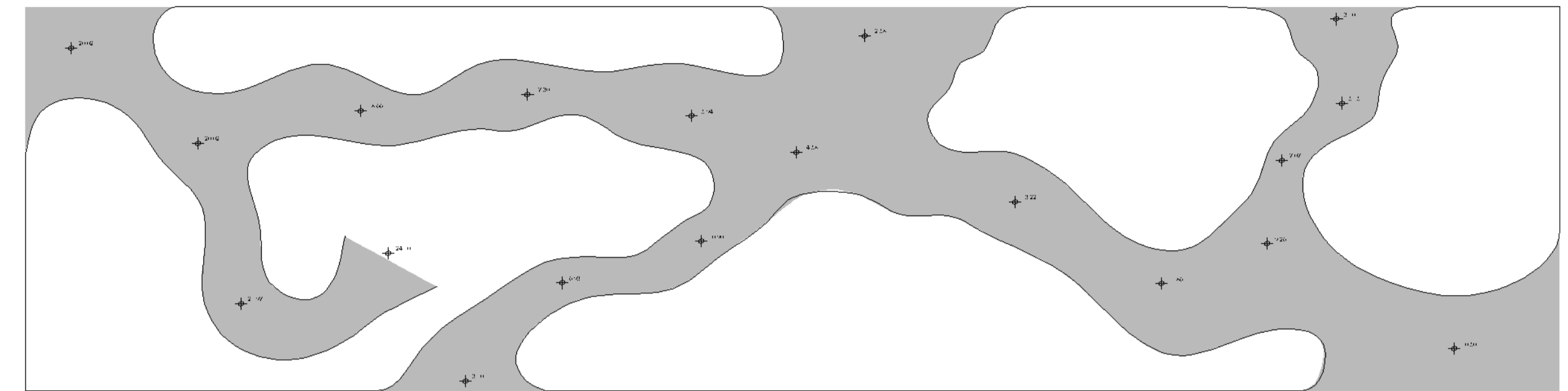
Money on the Desk



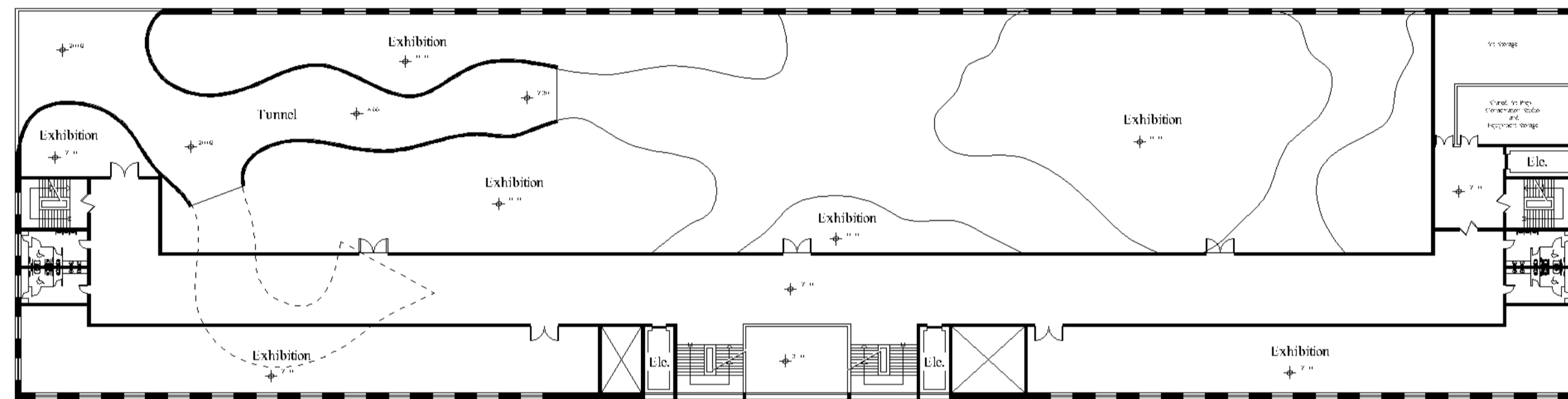
Site Plan - Scale: 1/500



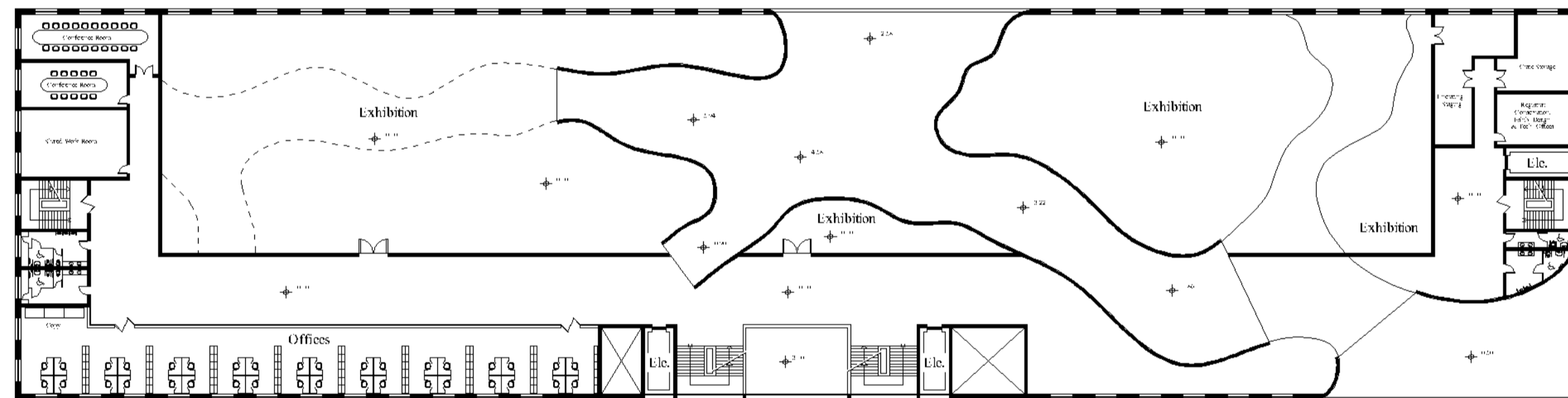
Roof Floor Plan - +24.10 - Scale: 1/500



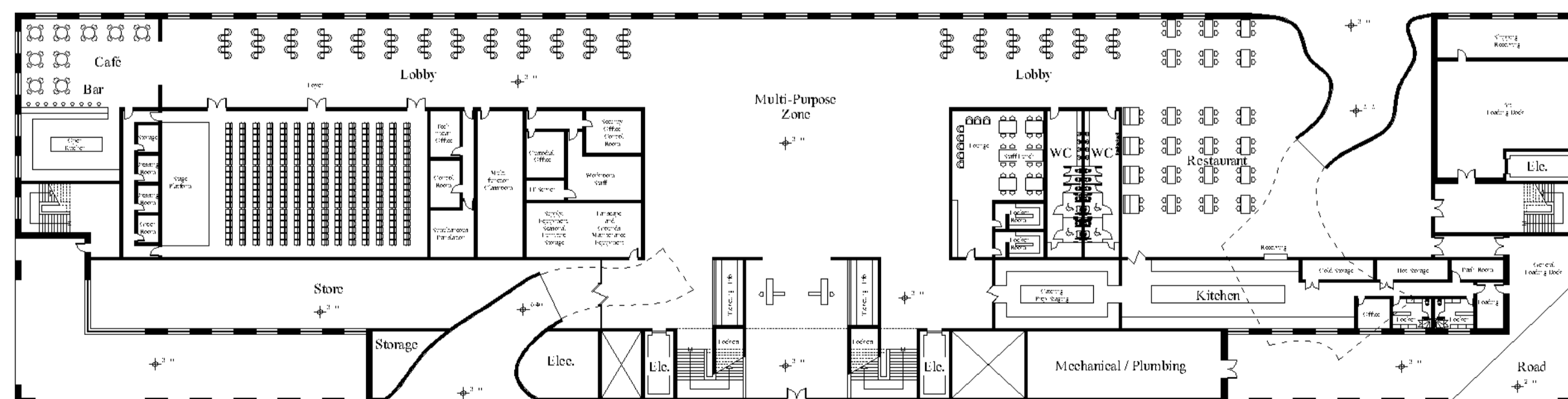
Tunnel Plan - Scale: 1/500



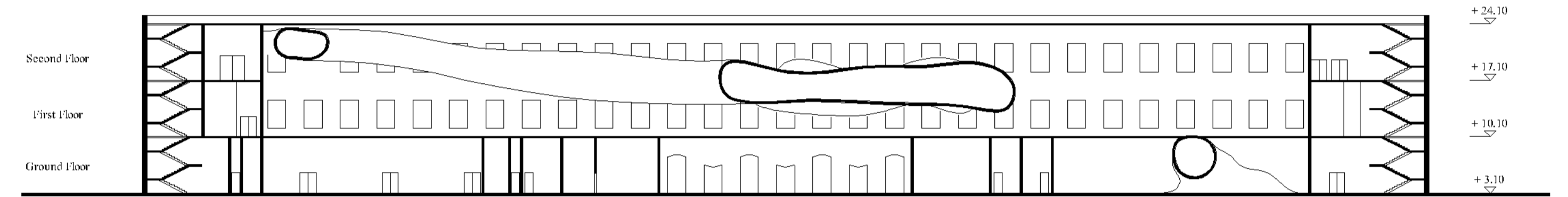
Second Floor Plan - +17.10 - Scale: 1/500



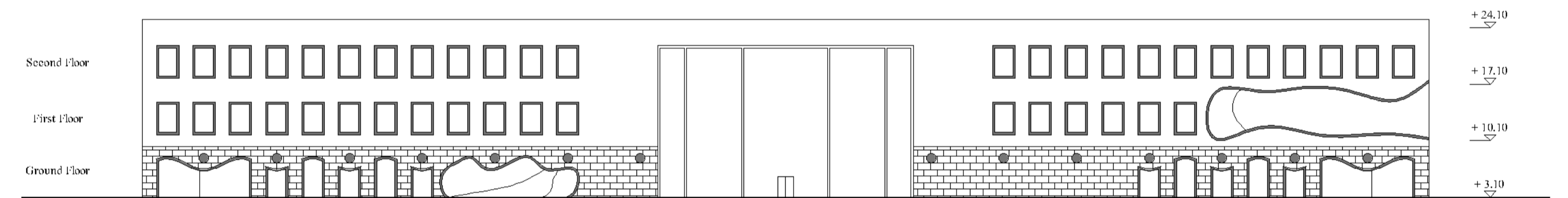
First Floor Plan - +10.10 - Scale: 1/500



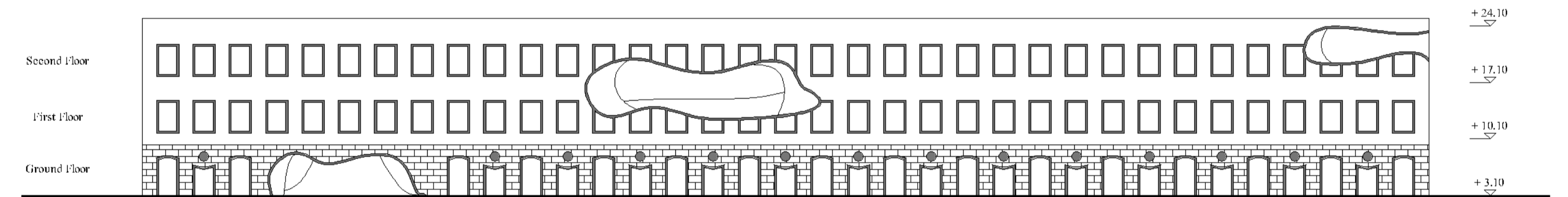
Ground Floor Plan - +3.10 - Scale: 1/500



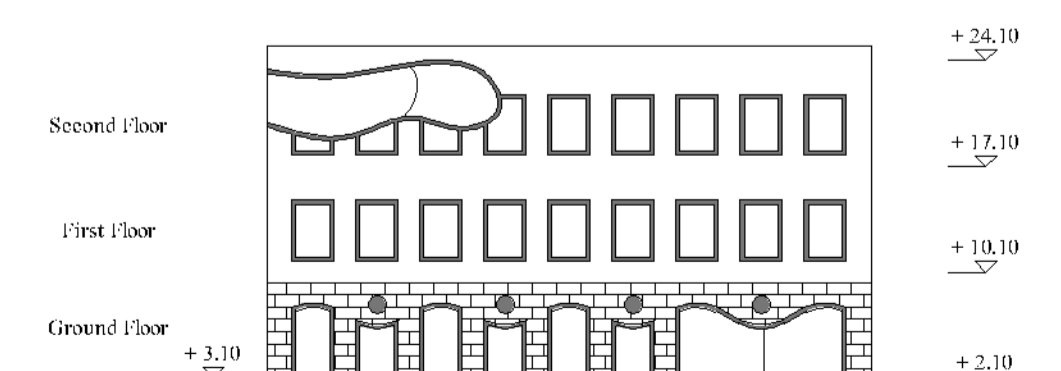
Section A-A - Scale: 1/500



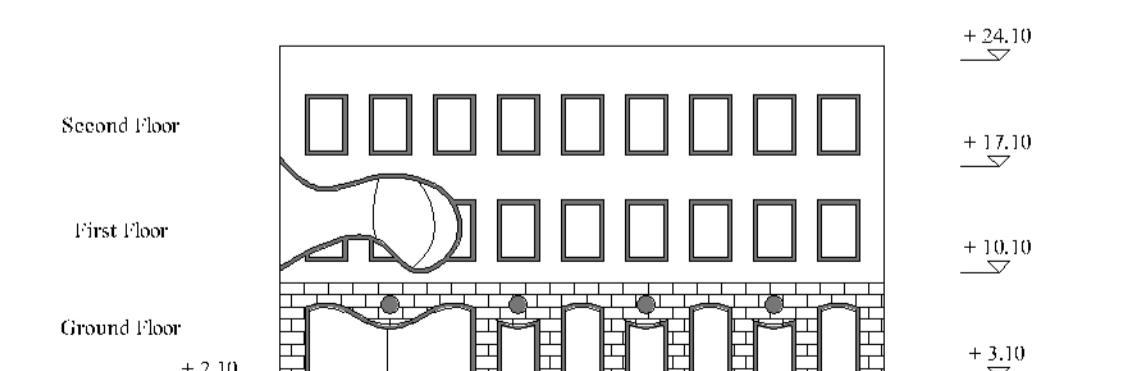
South West Elevation (Road Side) - Scale: 1/500



North East Elevation (Sea Side) - Scale: 1/500



North West Elevation (Left) - Scale: 1/500



South East Elevation (Right) - Scale: 1/500